

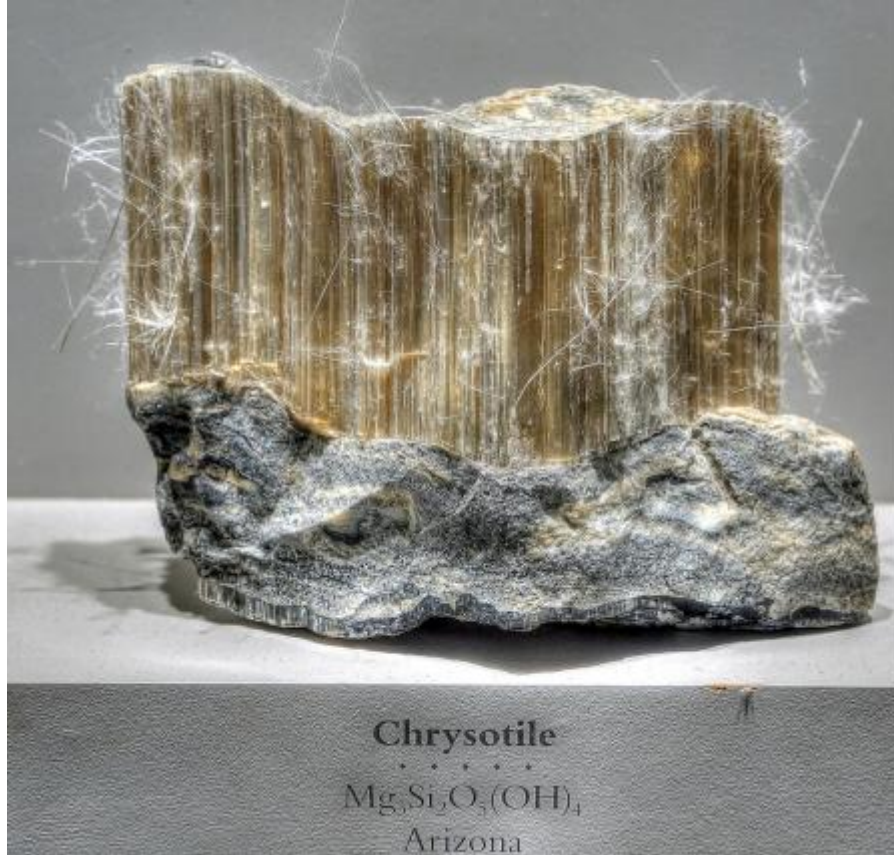
ASBESTOS DISEASES

Dr Alastair Robertson

Occupational Health Department
University Hospital Birmingham
Birmingham
B29 6JF
01216278285
Alastair.robertson@uhb.nhs.uk

Occupational Lung Disease Unit
Birmingham Chest Clinic
Heart of England NHS Trust
151 Great Charles Street
Queensway, Birmingham B3 3HX
0121 424 1950

Asbestos

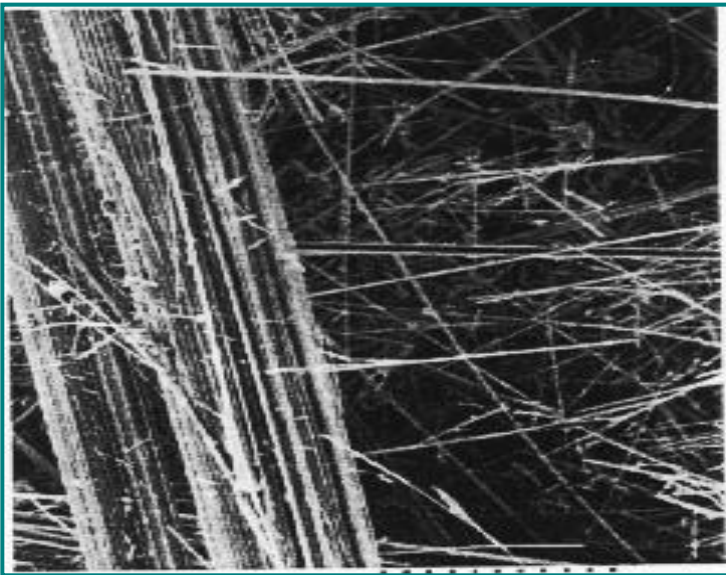
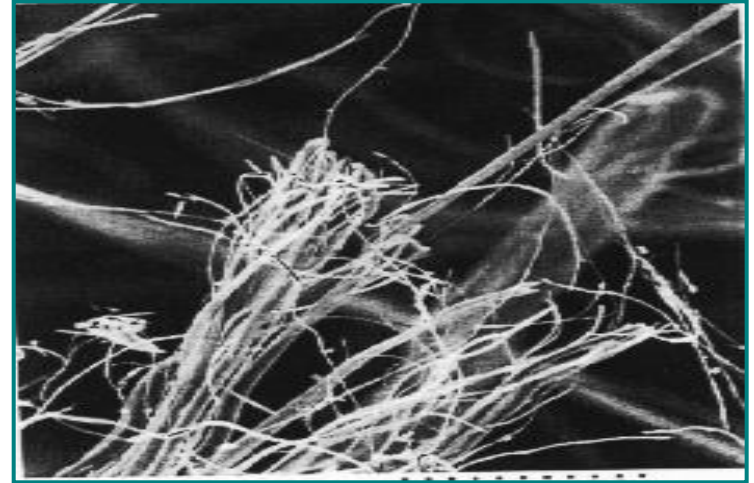


- Insulates
- Fire resistant
- Chemically resistant

Asbestos

Serpentine group

Chrysotile (white asbestos)



Amphibole group

amosite (brown asbestos),
crocidolite (blue asbestos),
anthophyllite, actinolite,
tremolite

Others erionite

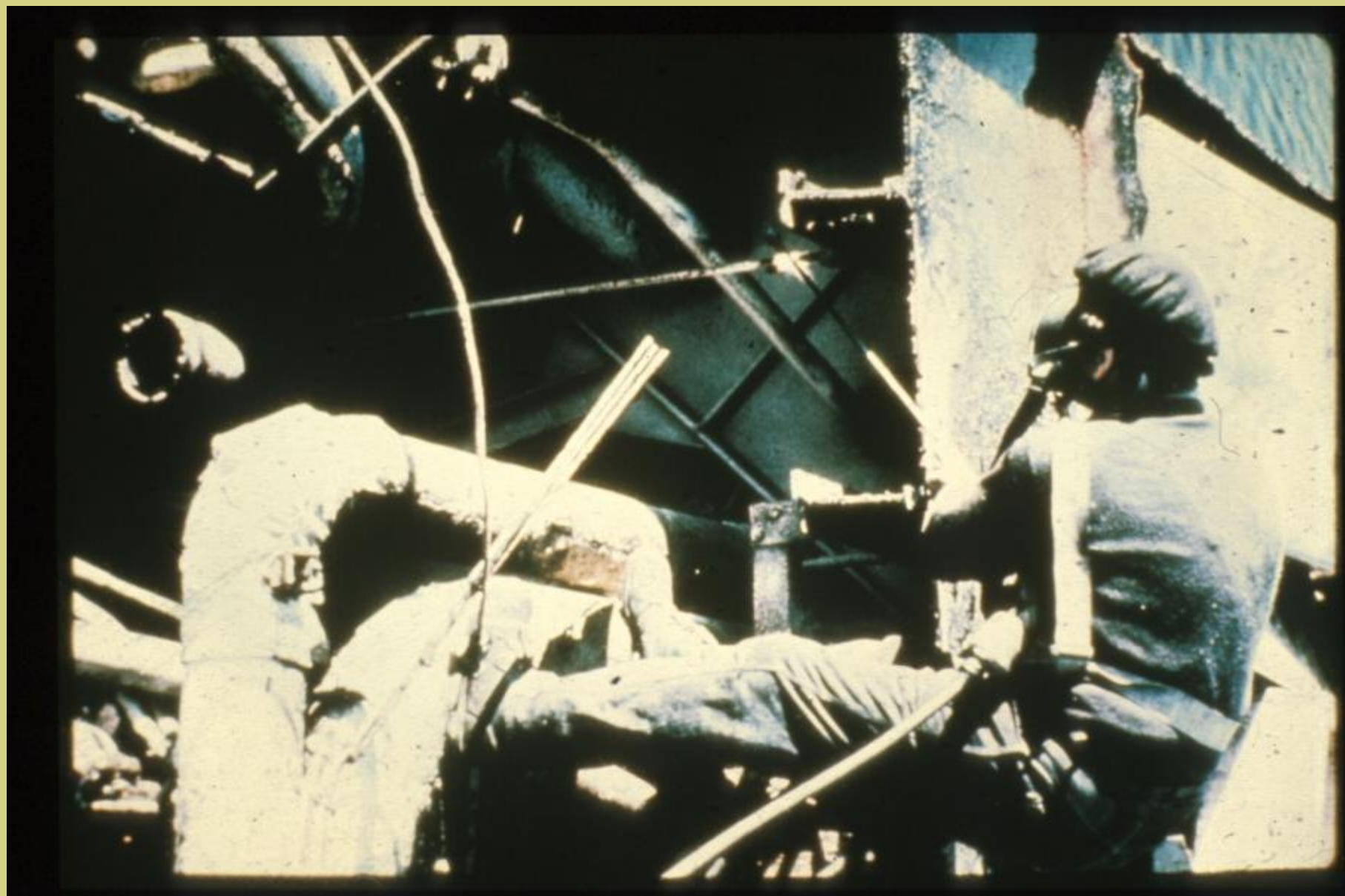
Asbestos use worldwide (2006)

- Top five producers (tons)

• Russia	925,000
• Kazakhstan	355,000
• China	350,000
• Canada	243,000
• Brazil	236,100

- Top five consumers (tons)

• China	530,190
• Russia	292,541
• India	272,856
• Kazakhstan	151,231
• Brazil	143,123



Asbestos Uses



Friction materials and gaskets



Insulation

Asbestos uses - Textiles



Asbestos usage - construction



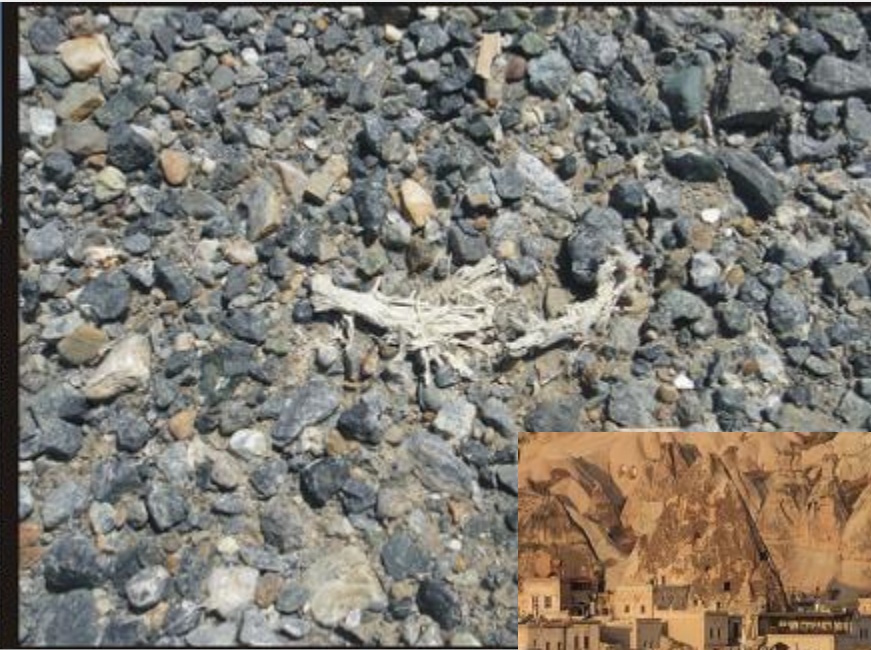


Asbestos – domestic exposure



Gloucester Railway Carriage and Wagon Works

Asbestos exposure - environmental

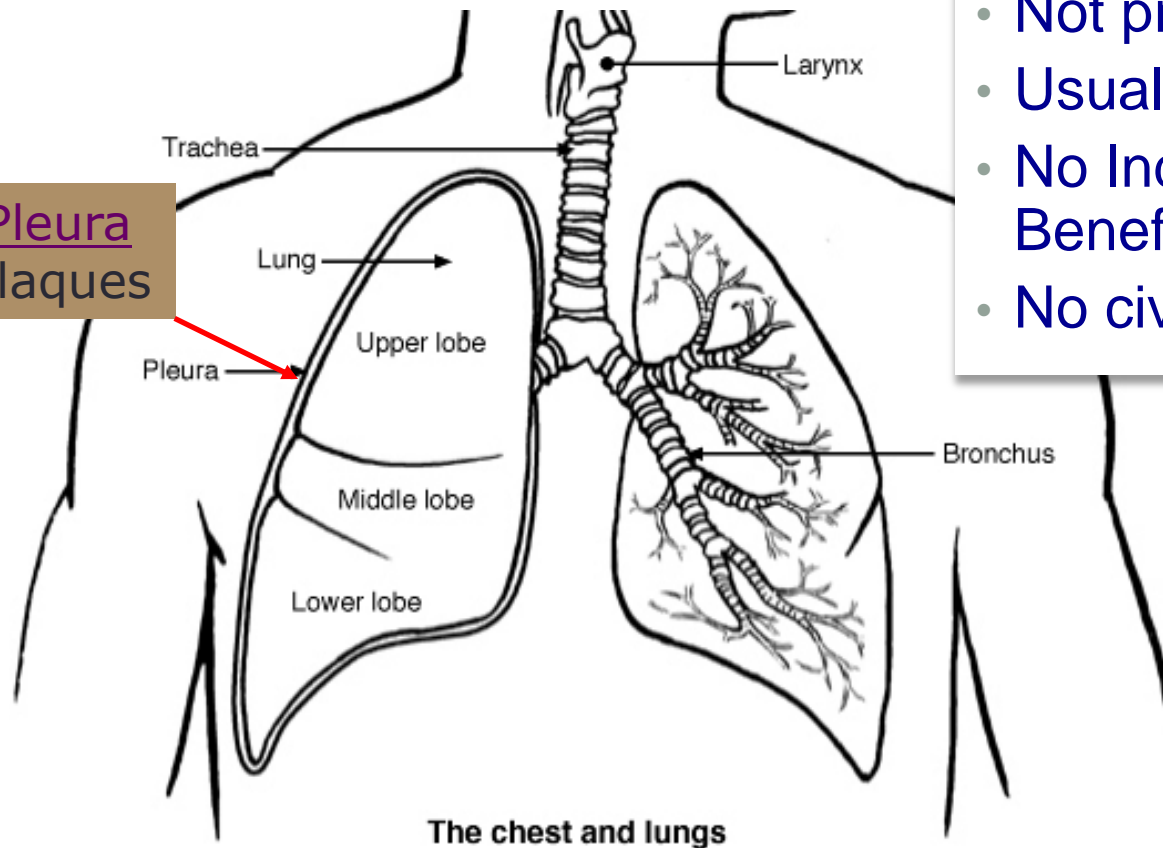




Asbestos related diseases

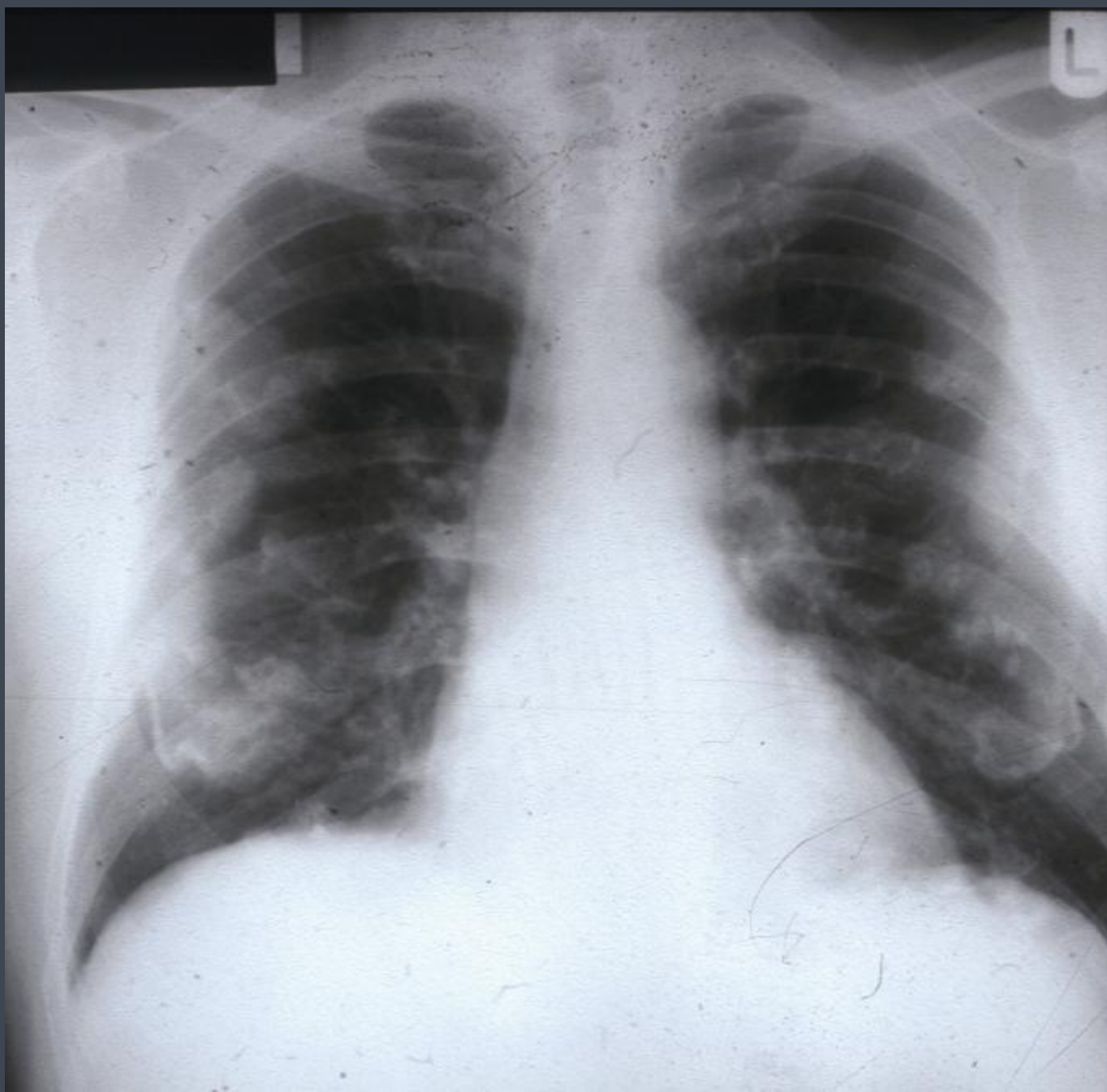
pleural plaques

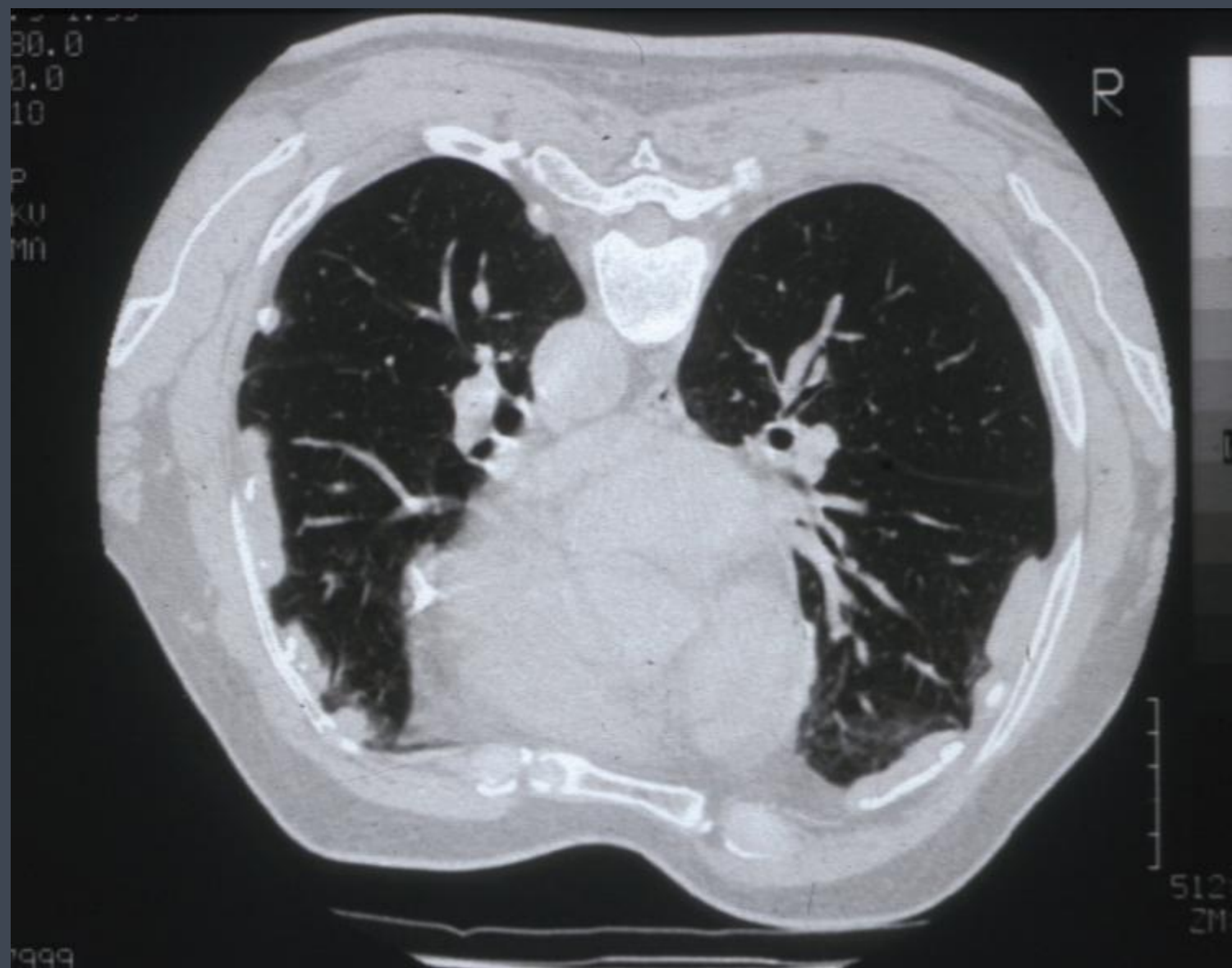
- Common
- Not pre-malignant
- Usually no symptoms
- No Industrial Injuries Benefit
- No civil claim



Parietal Pleura
pleural plaques

The chest and lungs



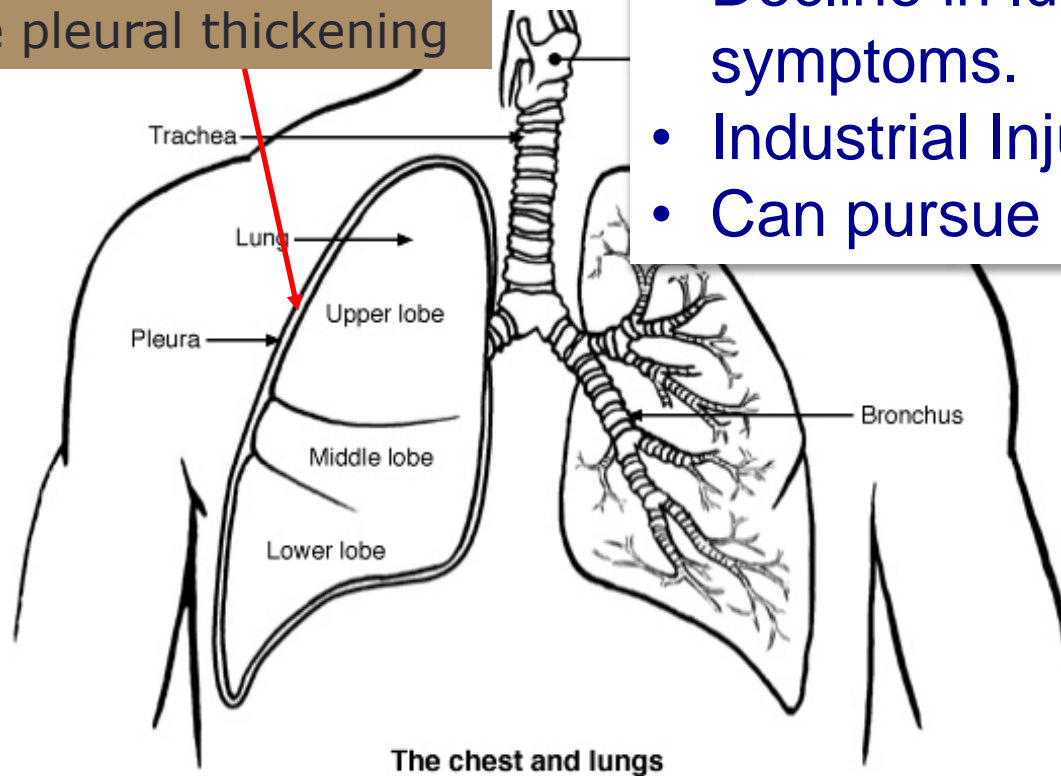


Asbestos related diseases

Diffuse pleural thickening

Visceral Pleura

Diffuse pleural thickening

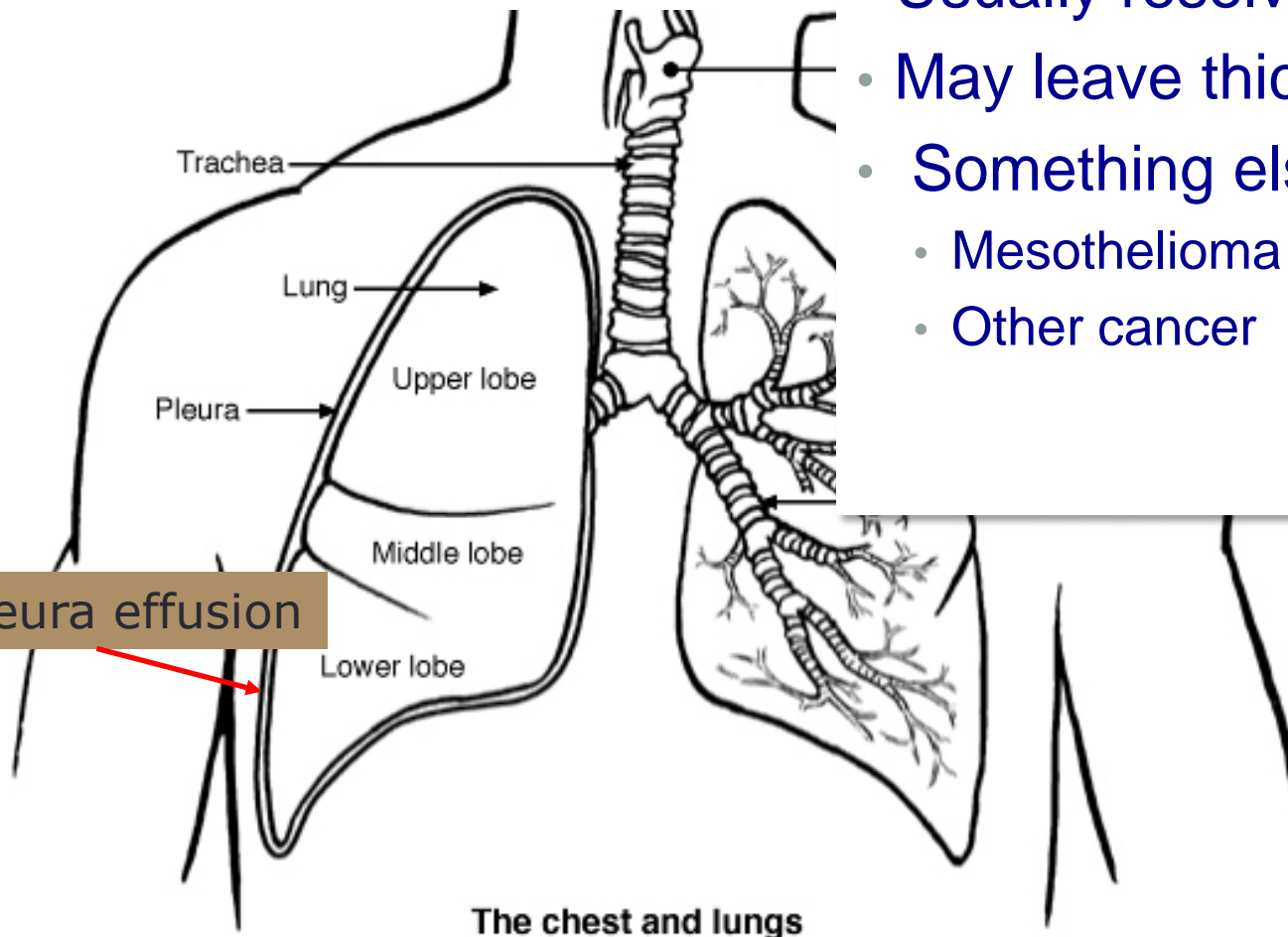


- About 20% show progression
- Decline in lung function and symptoms.
- Industrial Injuries Compensation
- Can pursue a civil claim

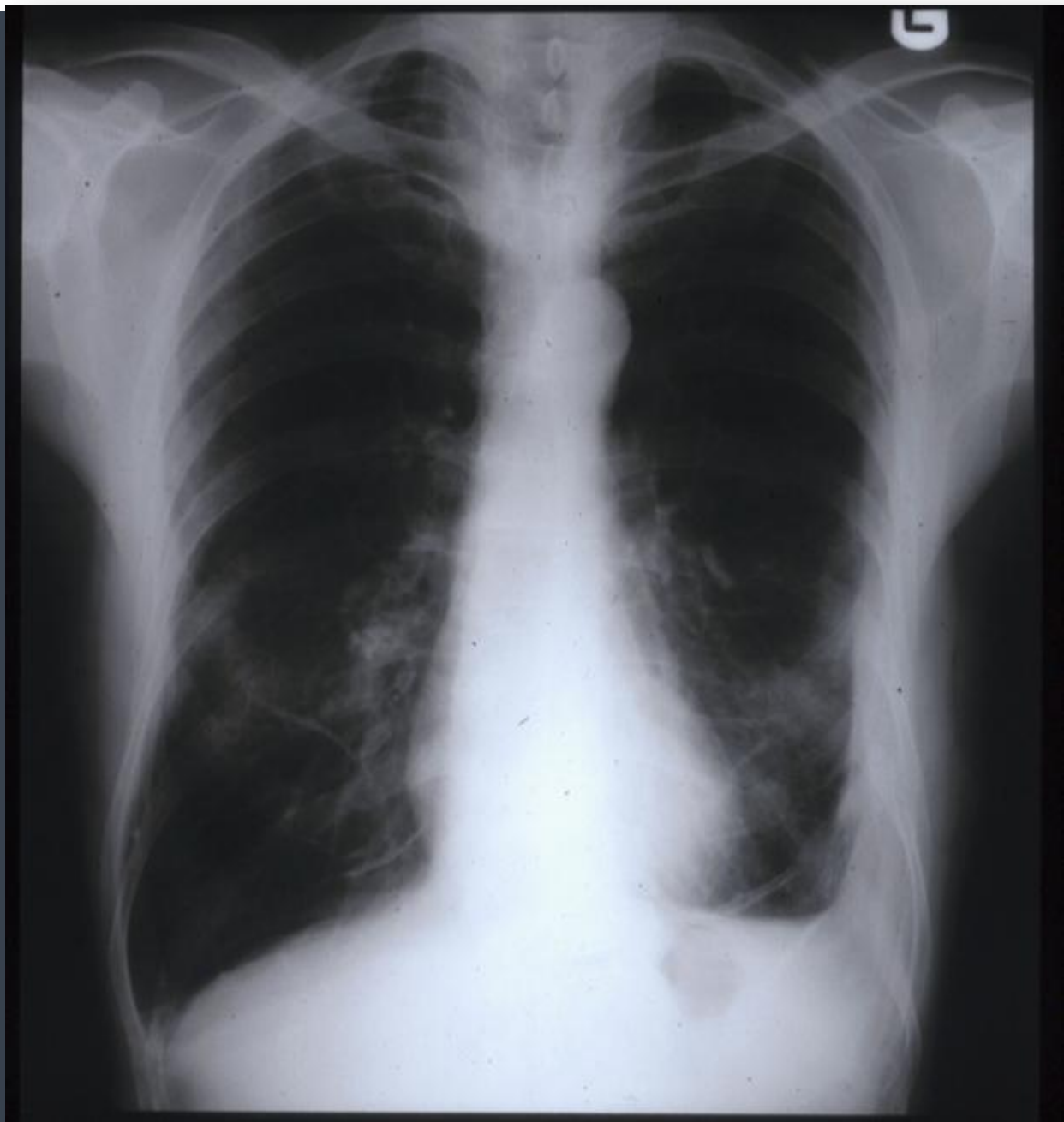
Asbestos related diseases

Benign pleura effusion

- May occur “early”
- Usually resolves
- May leave thickening
- Something else?
 - Mesothelioma
 - Other cancer



Benign pleura effusion





Disablement Benefit for diffuse pleural disease

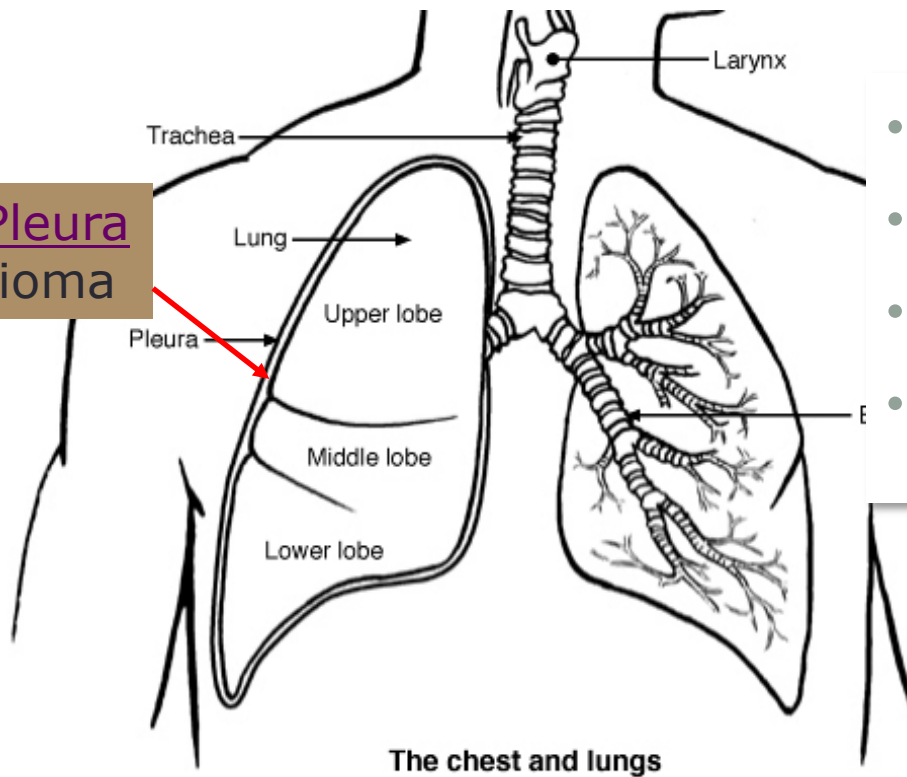
Unilateral or bilateral
diffuse pleural thickening
with blunting of the
costo-phrenic angle



Asbestos related diseases

Mesothelioma

Parietal Pleura
Mesothelioma

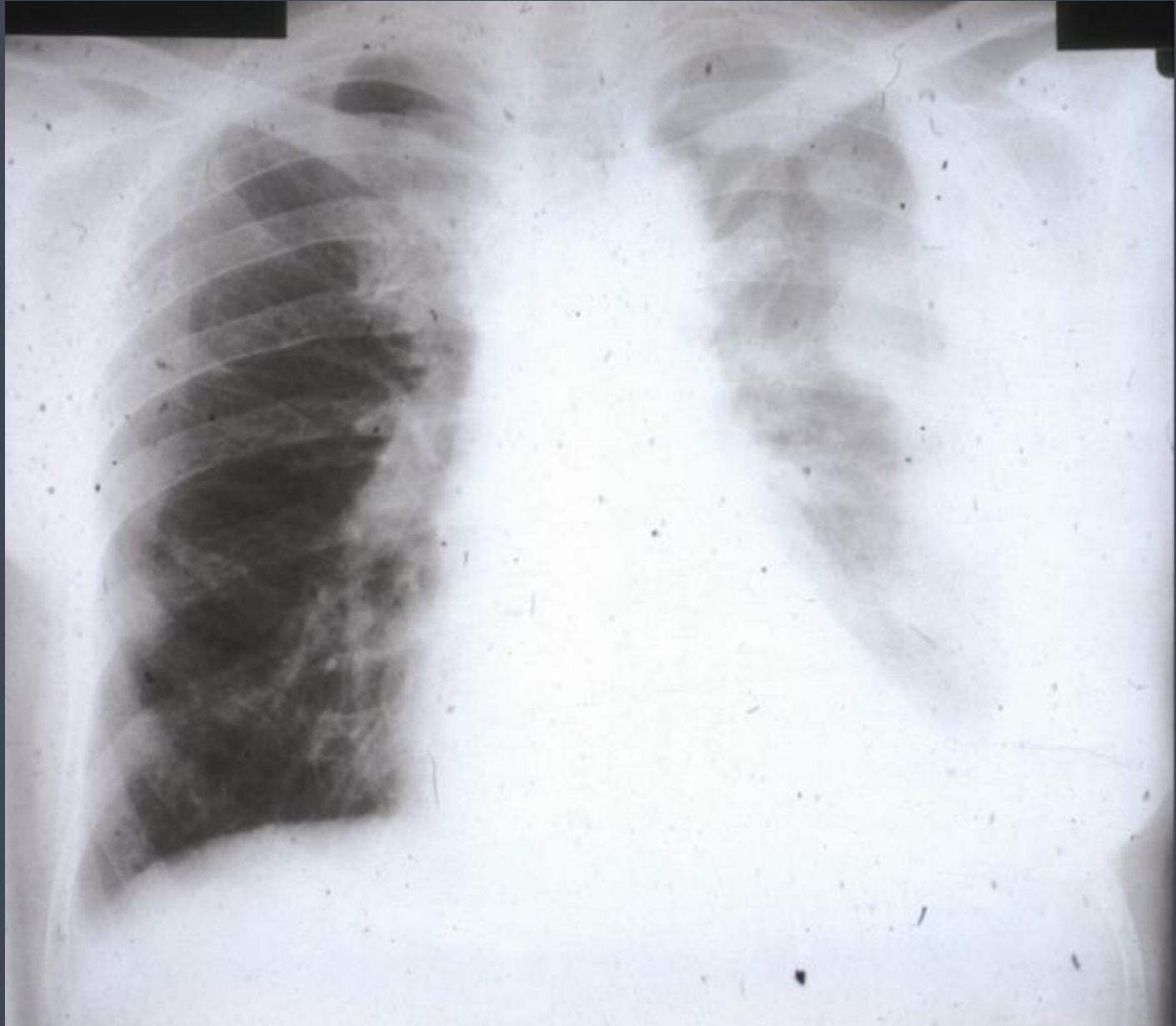


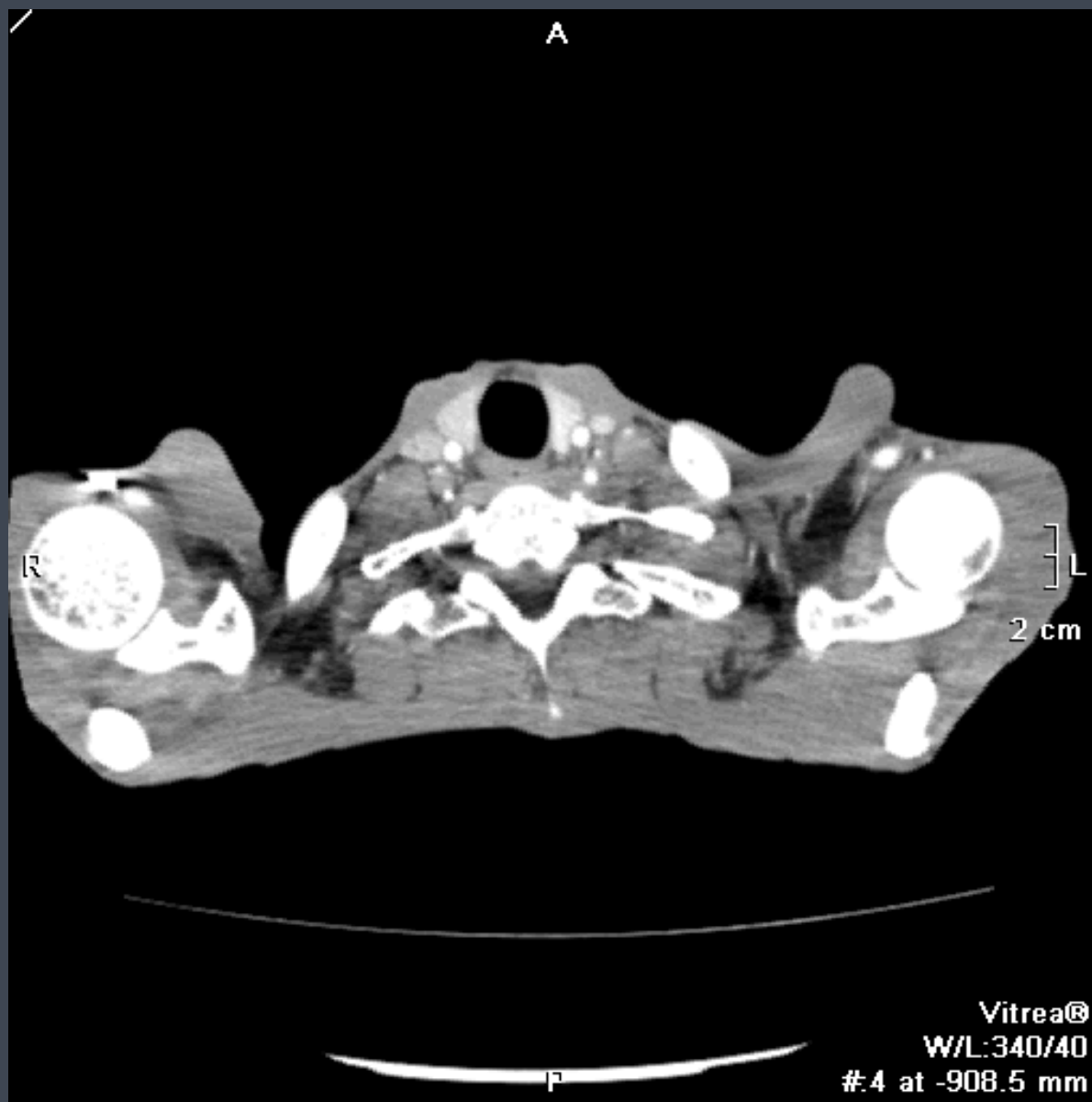
- Usually chest
- May be abdominal
- Locally invasive
- Usually fatal <18 months

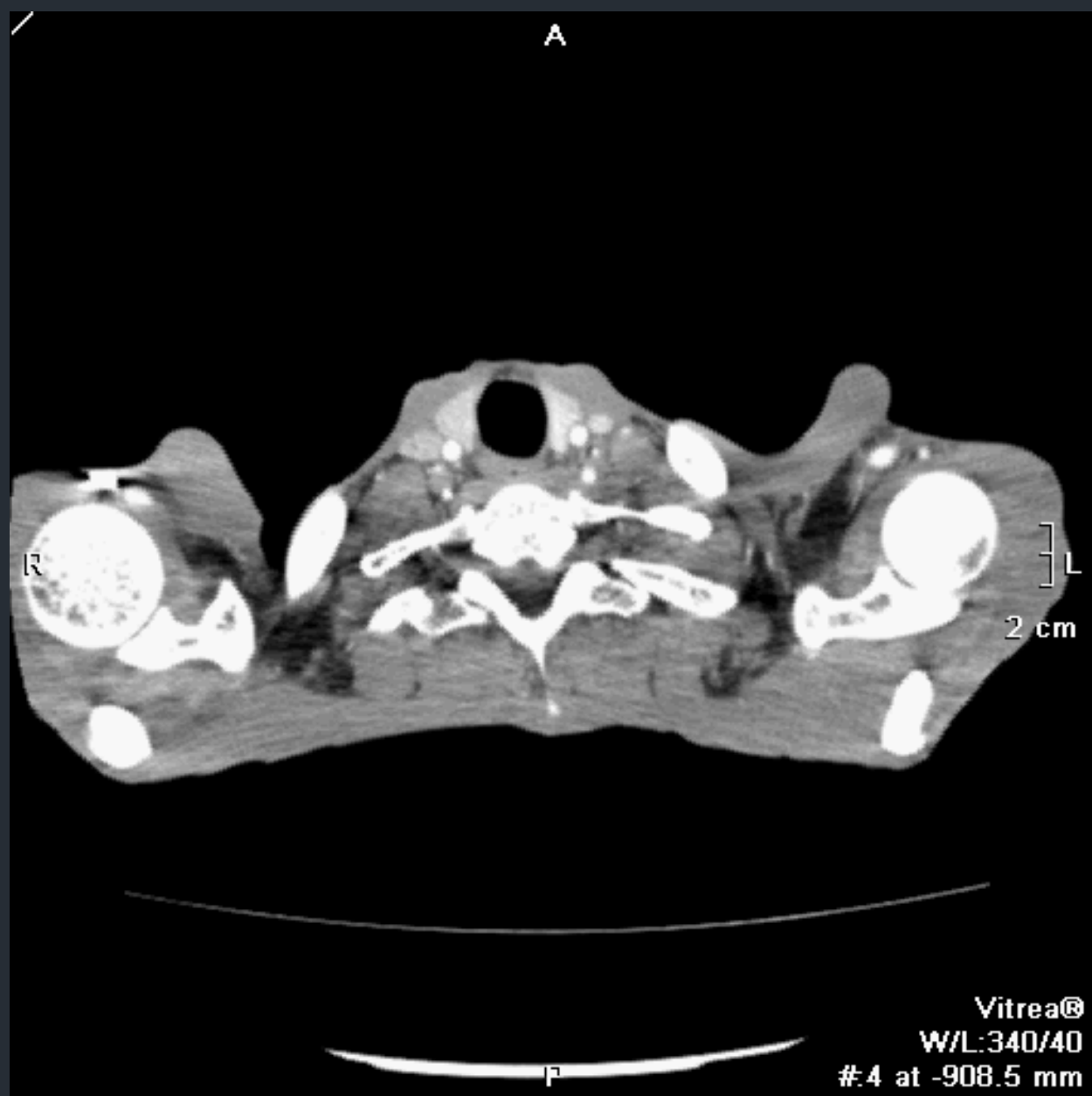
Mesothelioma

Symptoms

- Chest pain
- Weight loss
- Cough
- Breathlessness







A

R

L

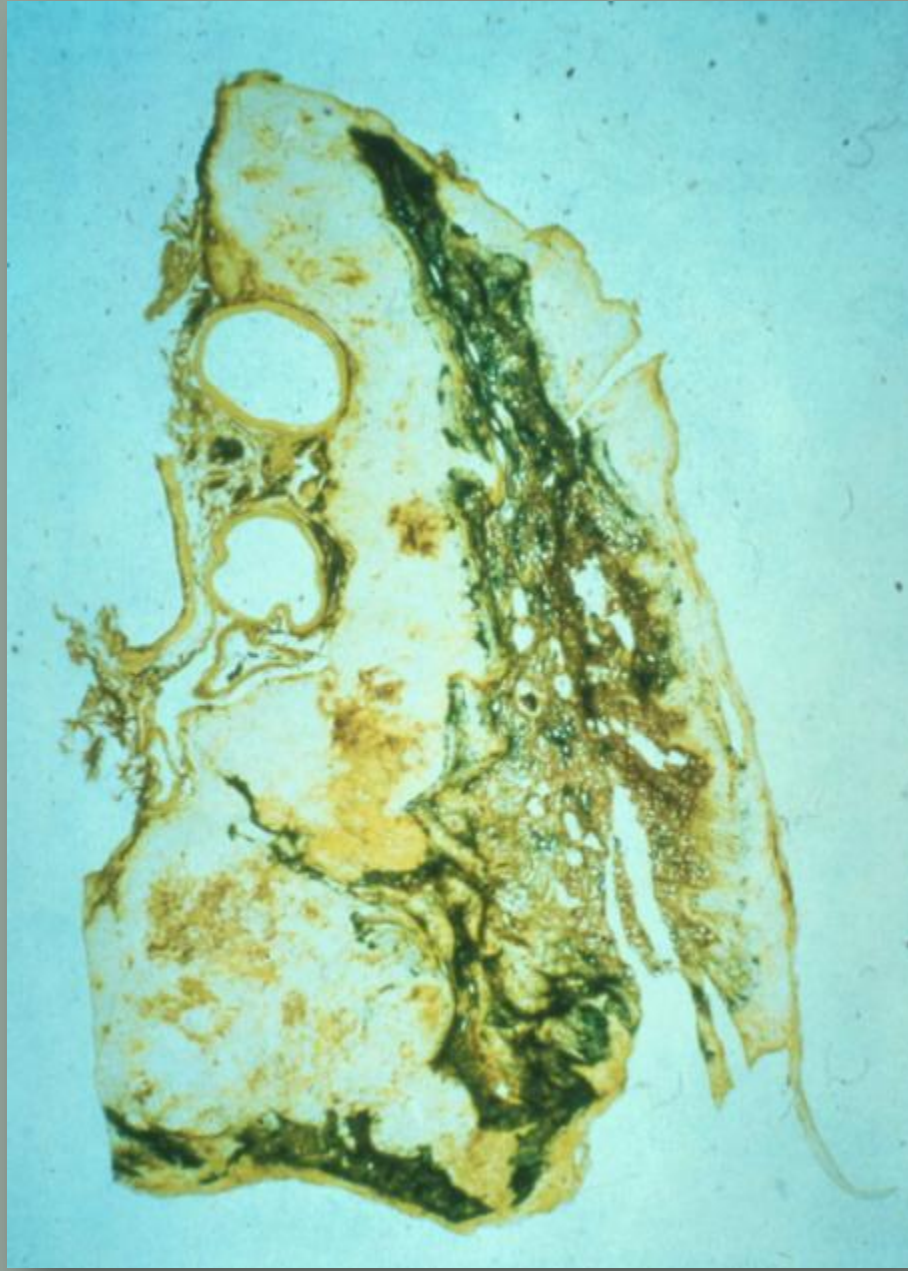
2 cm

Vitrea®

W/L:340/40

#4 at -908.5 mm

P



Mesothelioma

Treatment

Pain relief

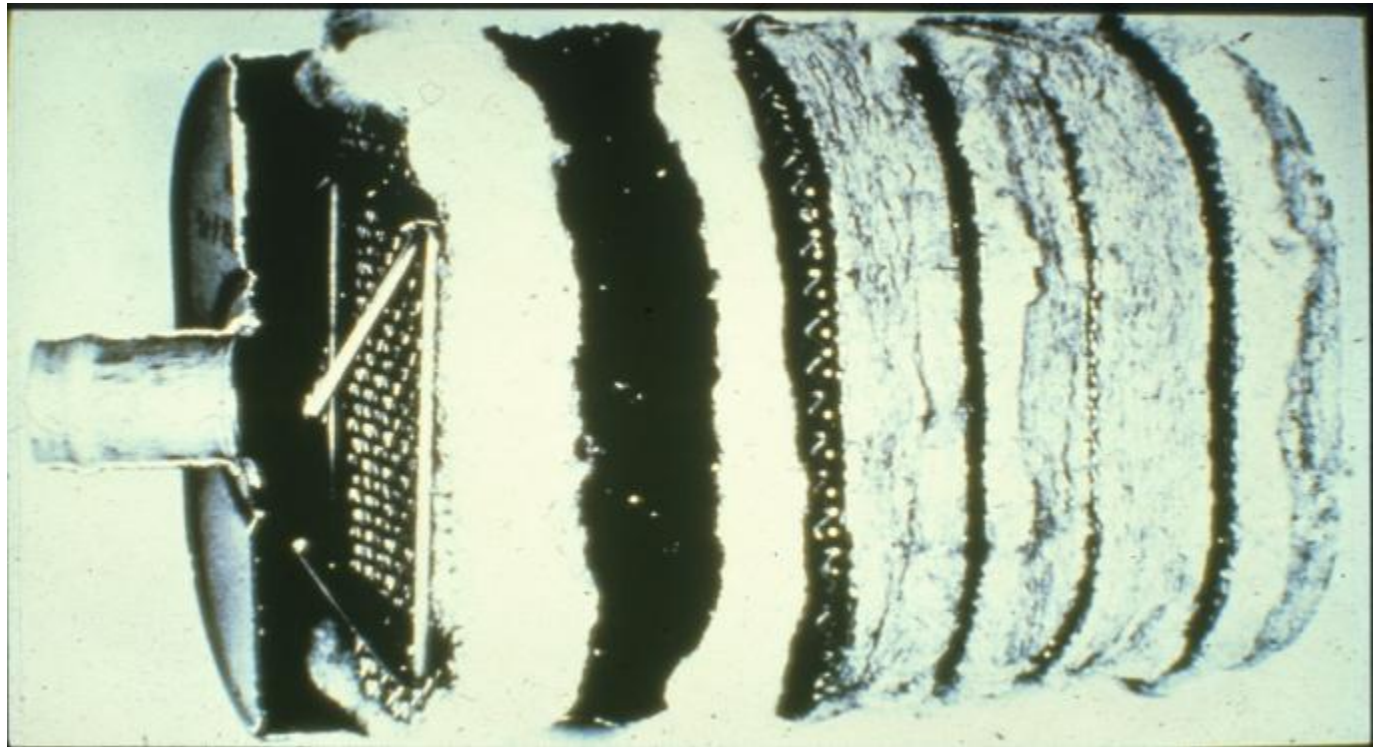
Compensation

Industrial Injuries Scheme – Prescribed Disease

Workmen's compensation

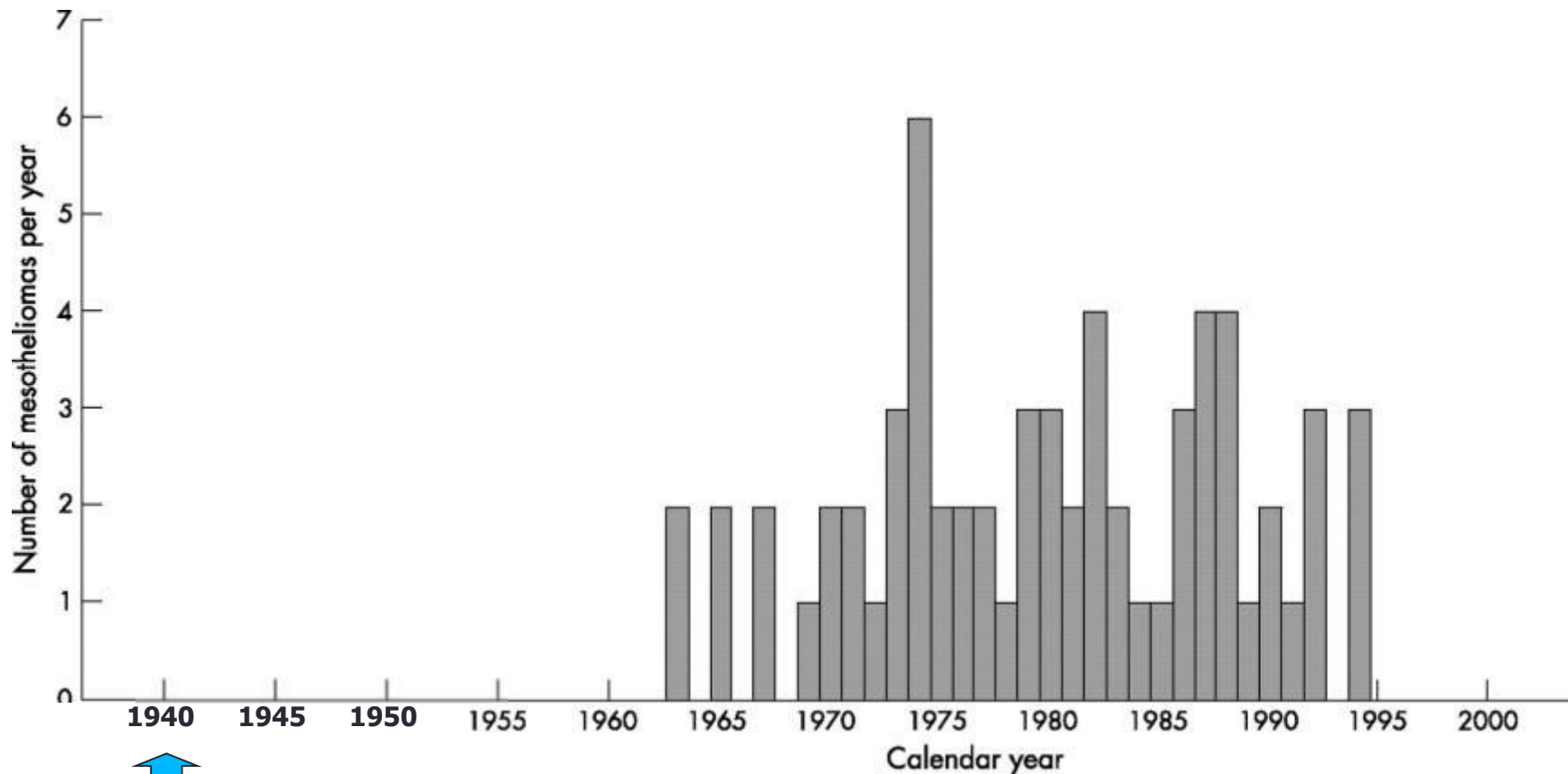
War Disablement Benefit

Mesothelioma from gas masks



Boots of Nottingham

Number of mesotheliomas by calendar year in the full group of 1154 former workers.

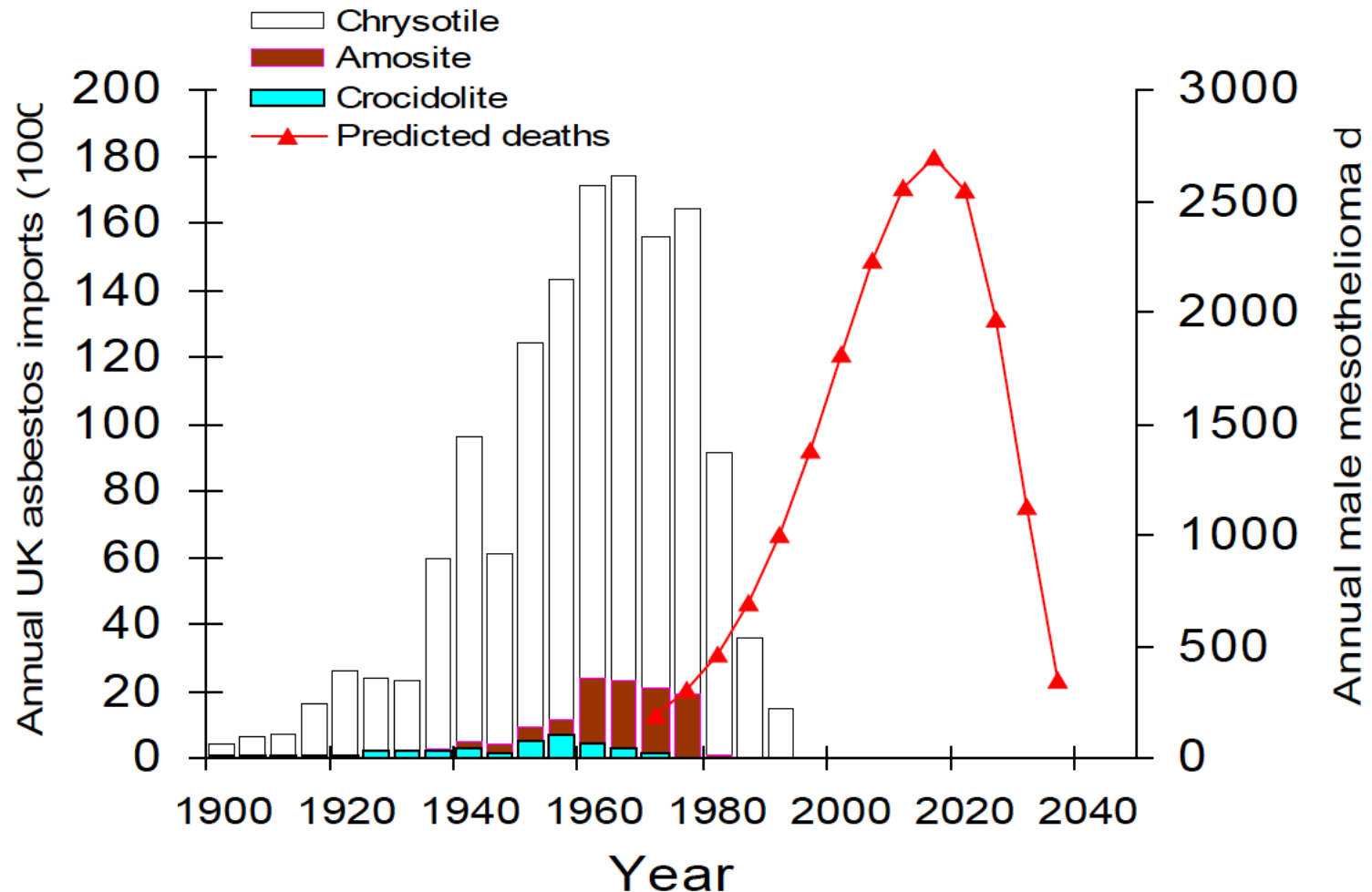


↑
Military Gas
Mask Production
Started

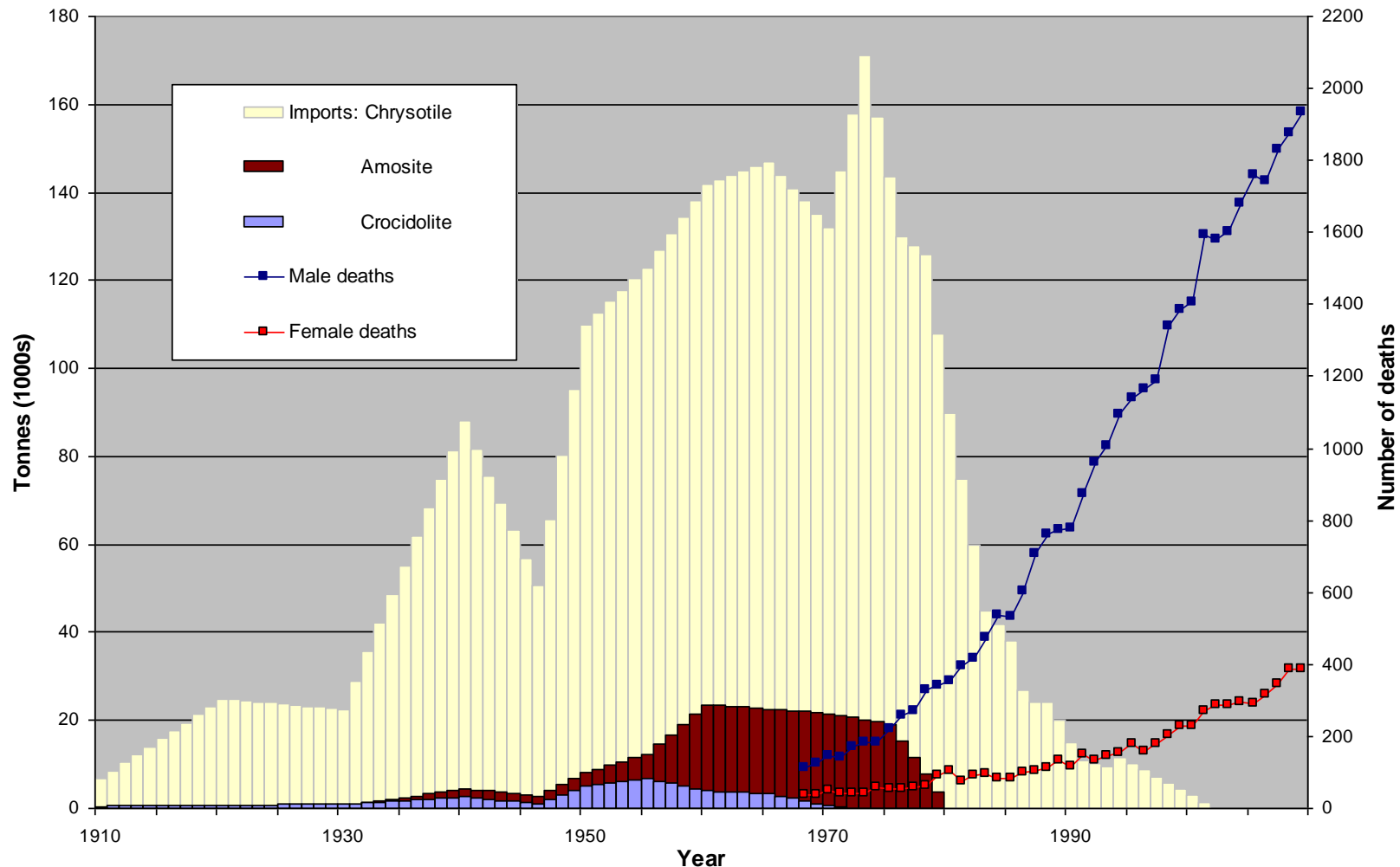


UK asbestos imports, and observed (1970-91) and predicted (1992-2040) mesothelioma deaths in men

Peto et al 1995: Lancet 345: 535-39



100 years of use and health consequences of asbestos use: asbestos imports and annual mesothelioma deaths in Great Britain



Source: HSE Mesothelioma Register

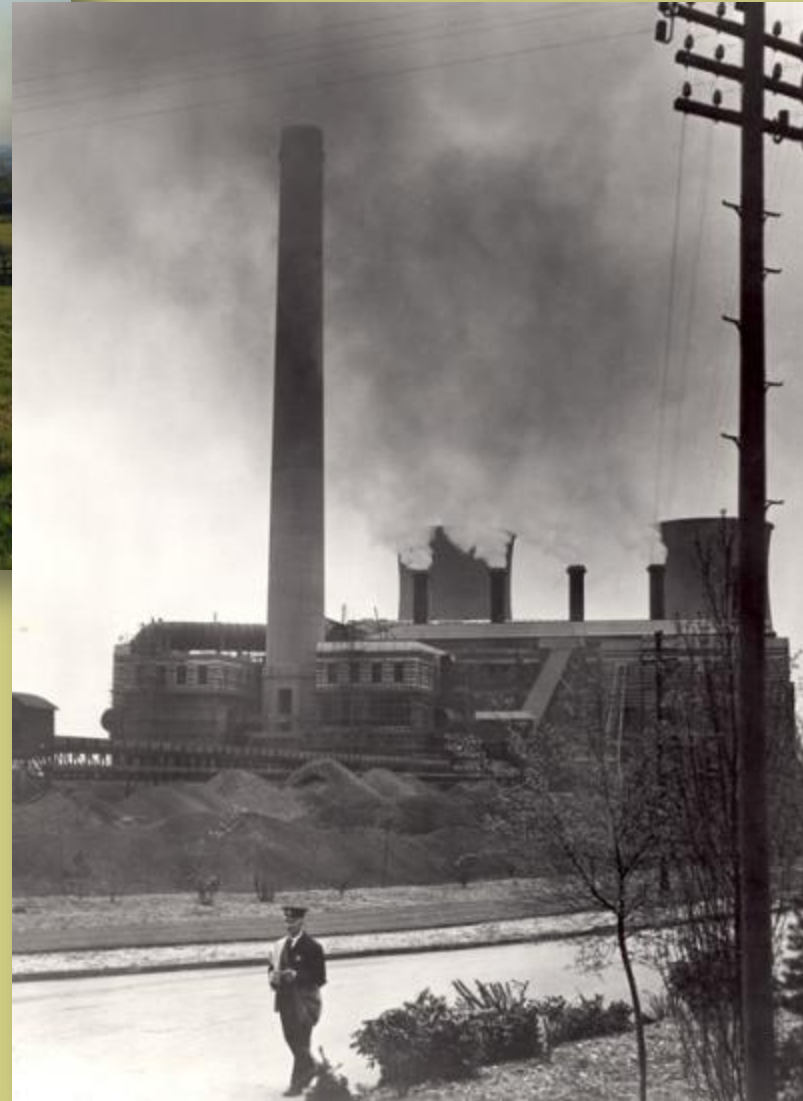
<http://www.hse.gov.uk/statistics/causdis/mesothelioma/mesothelioma.pdf>

Risk of Male Mesothelioma by Occupation 2002 -2010

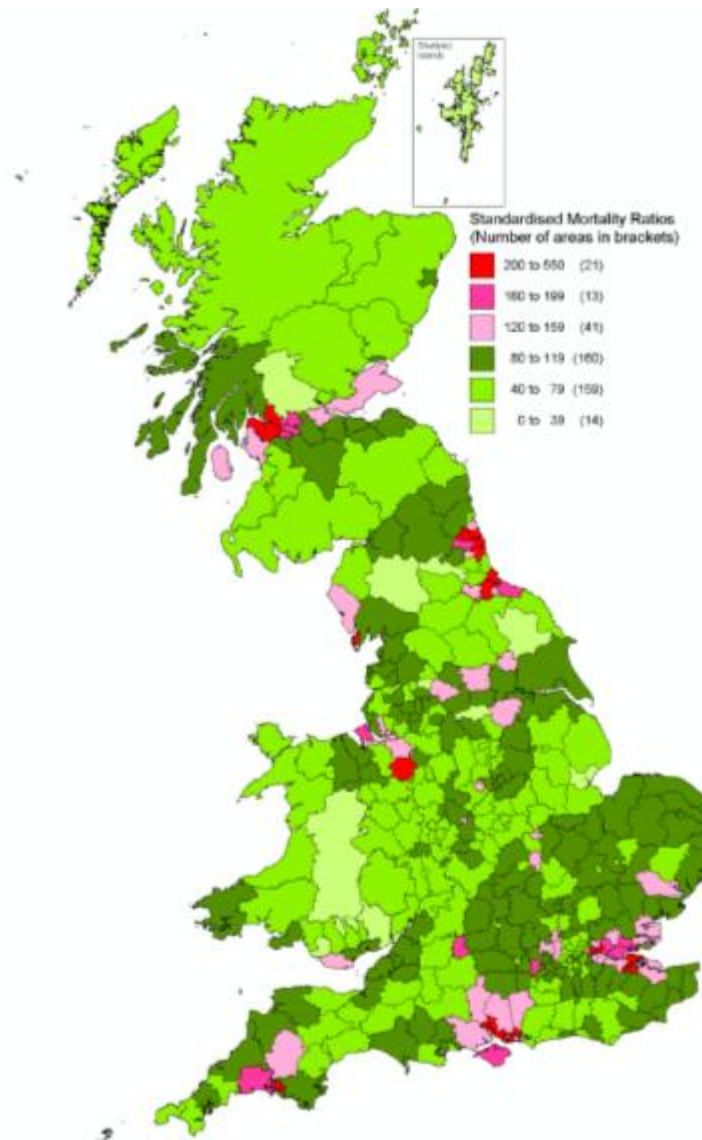
Occupation	PMR
Carpenters & joiners	407
Pipe fitters	360
Metal plate workers, shipwrights, riveter	338
Plumbers, heating & ventilating engineers	329
Electricians, electrical fitters	308
Labourers in other construction trades n.e.c.	297
Sheet metal workers	272
Energy plant operatives	263
Construction operatives	243

Source: HSE Mesothelioma Register

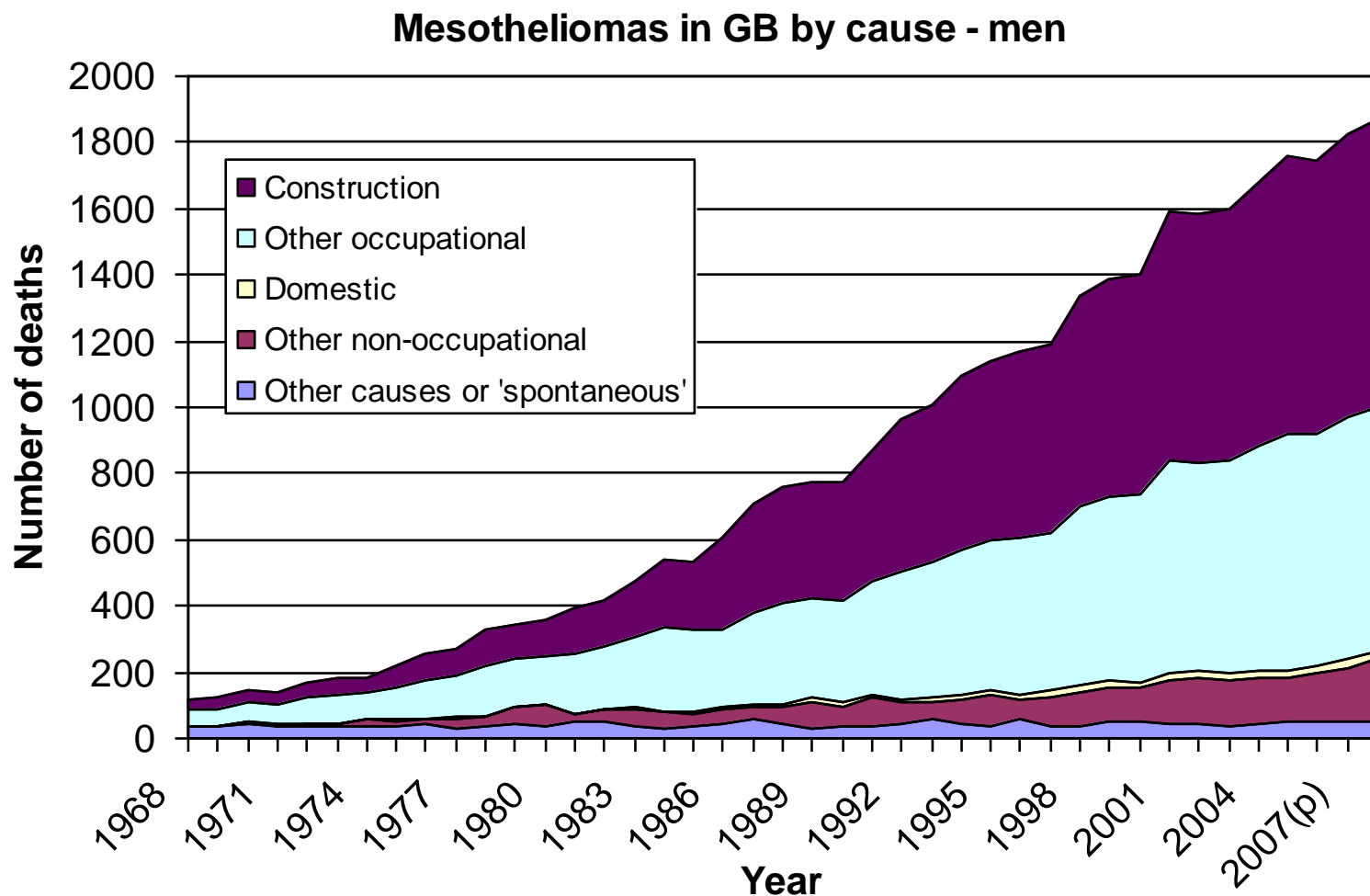
<http://www.hse.gov.uk/statistics/causdis/mesothelioma/mesothelioma.pdf>



Male Standardised Mortality Ratios (SMRs) for Mesothelioma by Local and Unitary Authority 1981 – 2005



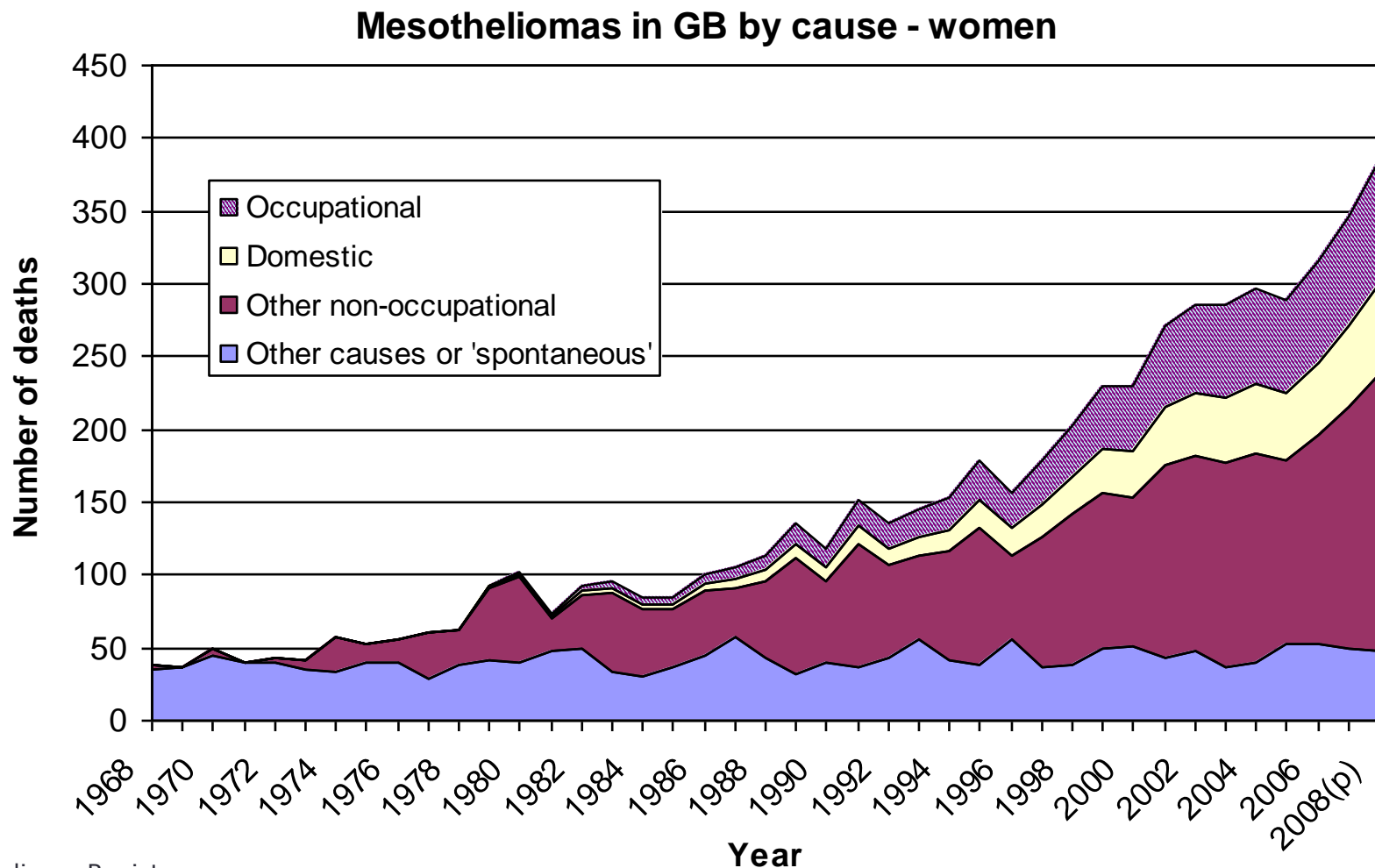
Sources of exposure: British mesothelioma case-control study



Source: HSE Mesothelioma Register

<http://www.hse.gov.uk/statistics/causdis/mesothelioma/mesothelioma.pdf>

Sources of exposure



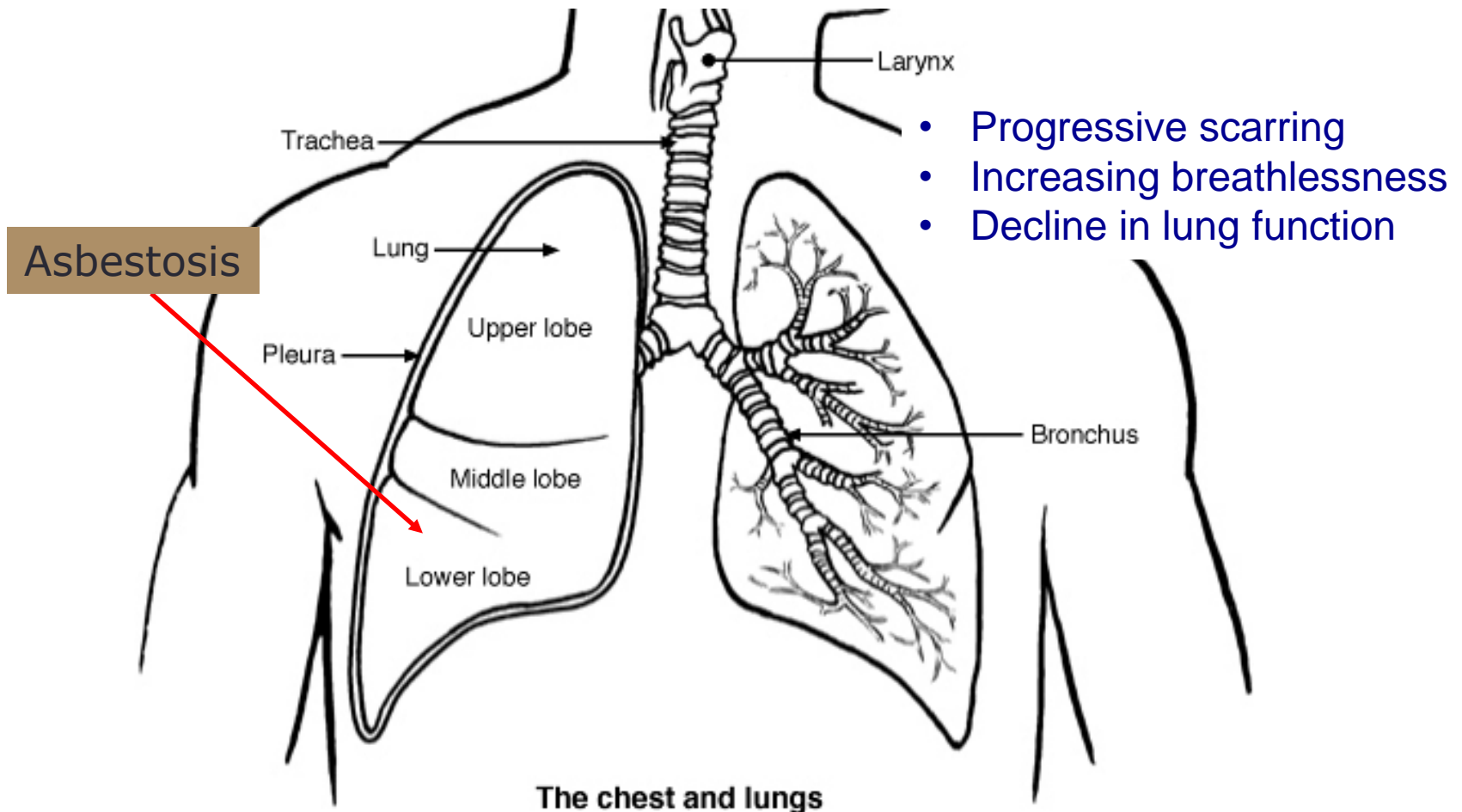
Source: HSE Mesothelioma Register

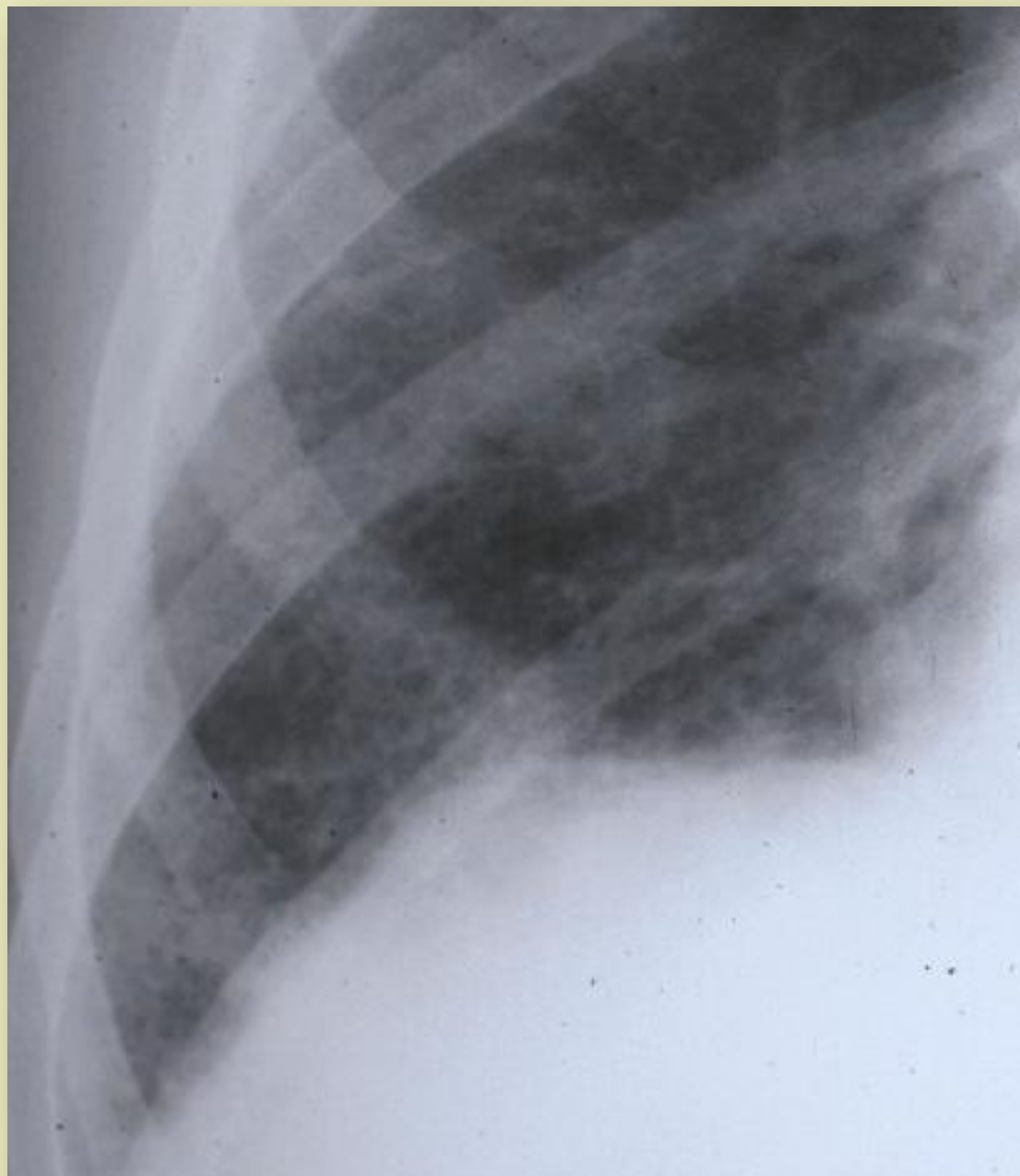
<http://www.hse.gov.uk/statistics/causdis/mesothelioma/mesothelioma.pdf>

Industrial Injuries Scheme

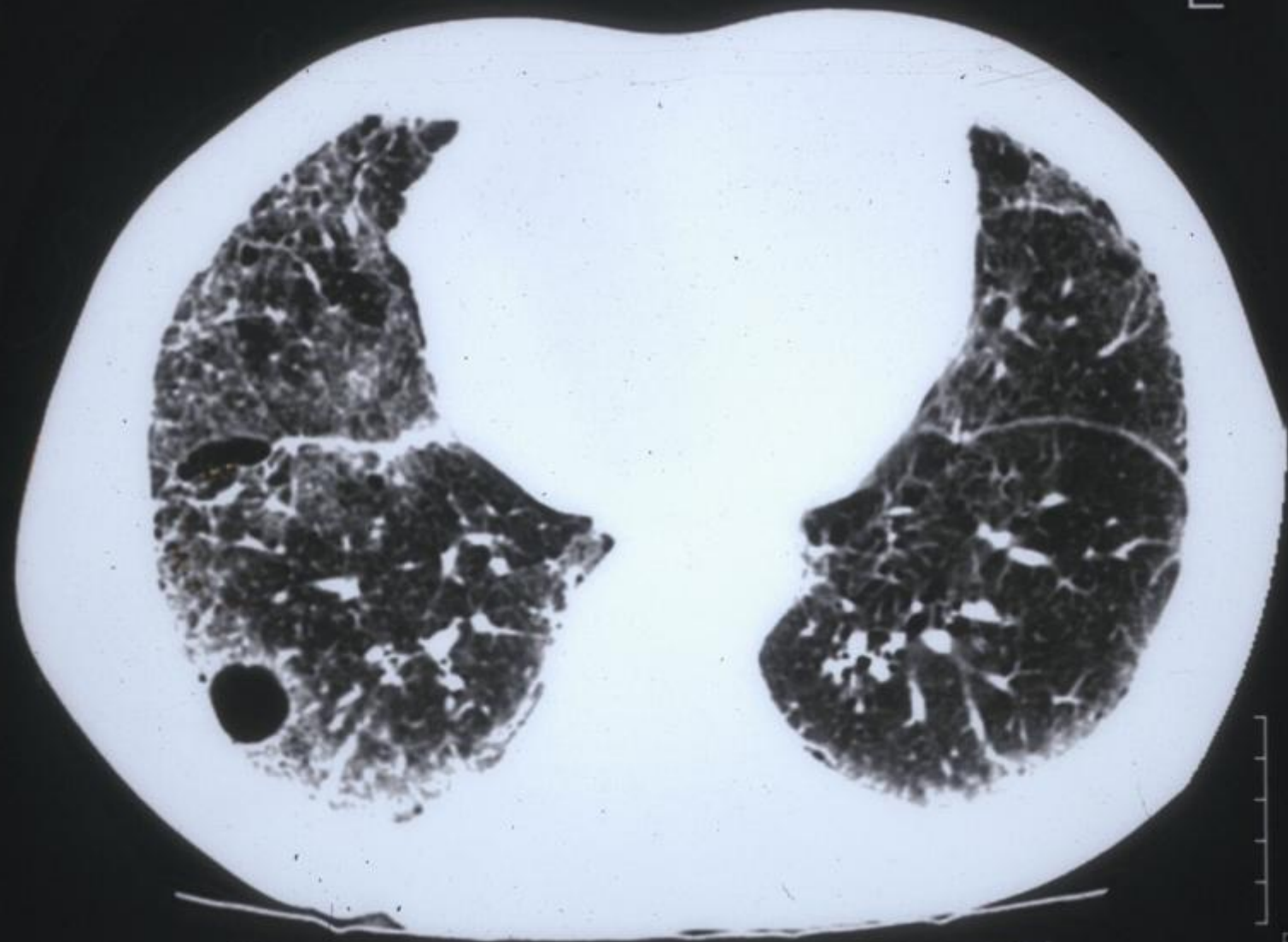
- **The Diffuse Mesothelioma Lump Sum Payment Scheme**
- The Mesothelioma Lump Sum Payment Scheme 2008
- 1st October 2008 – sufferers of Diffuse Mesothelioma who have been exposed to asbestos in the UK but are unable to claim compensation from other sources, for example, women who had washed their husband's clothes, or the self-employed.
- Liability Claim

Asbestos related diseases





L

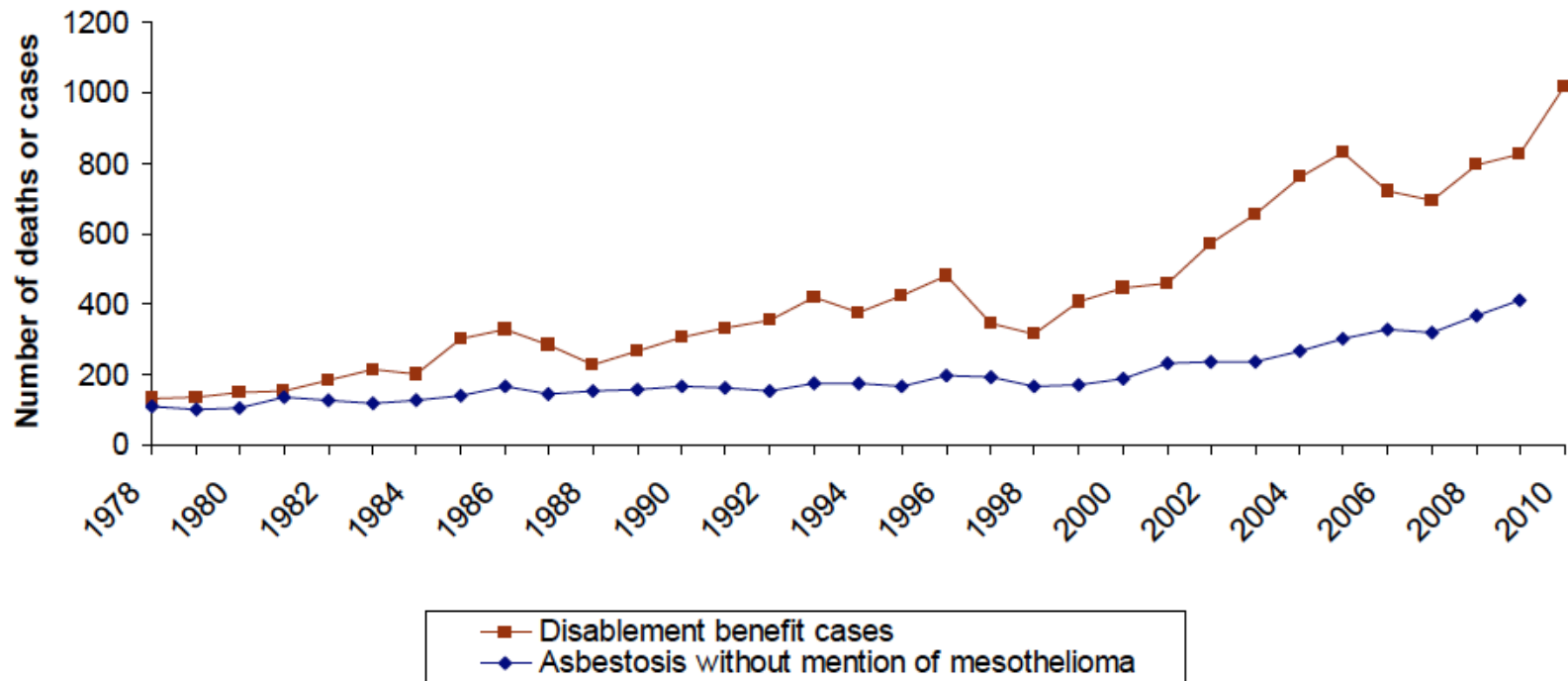


W10
-7

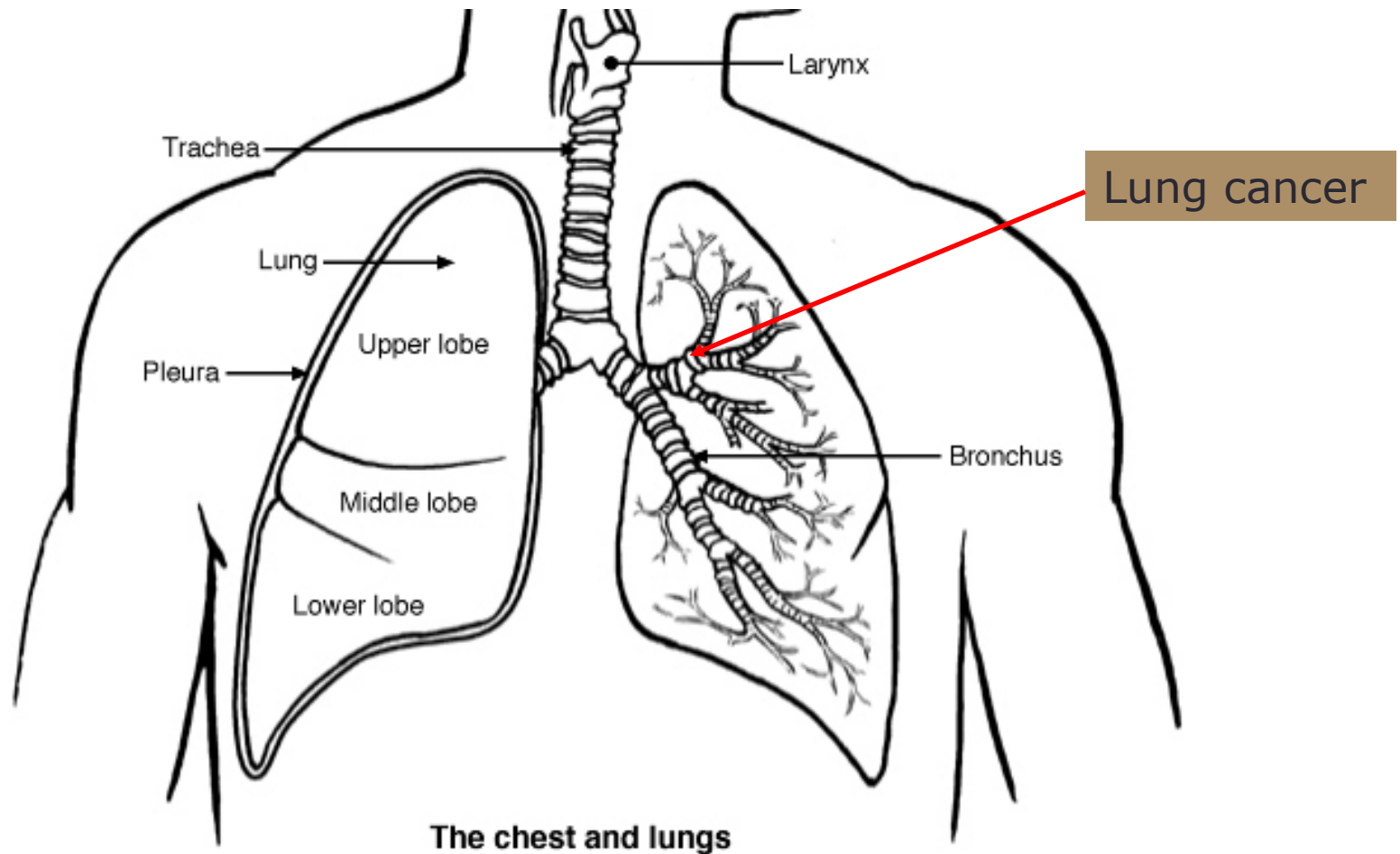
BG
BH
CF

512+51
7M+1

Asbestosis



Asbestos related diseases

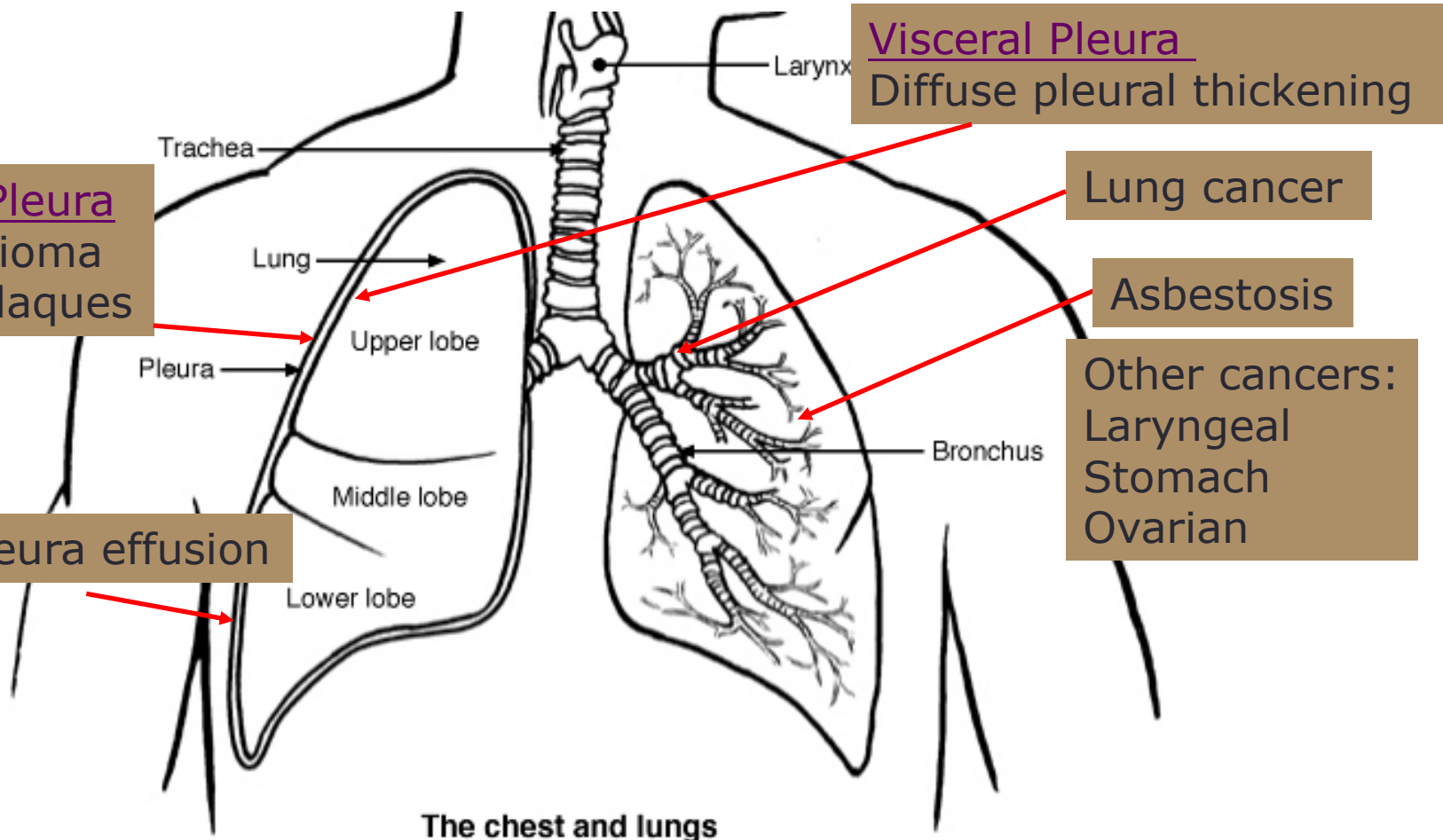


Smoking and asbestos exposure in insulation workers

Relative risk of lung cancer

		Asbestos exposure	
		No	Yes
Smoking	No	1	5.2
	Yes	10.8	53.2

Asbestos related diseases



Industrial Injuries Benefit

Prescribed Asbestos Related Diseases

- Lung cancer - PDD8- there must be accompanying asbestosis.
- 6th April 2006. PDD8a- exposure to asbestos must be in the course of:
 - the manufacture of asbestos textiles
 - spraying asbestos
 - asbestos insulation or
 - applying or removing materials containing asbestos in the course of shipbuilding;
- and:
 - Where all or any part of the exposure occurs before 1st January 1975 for a period of, or periods which amount in aggregate to 5 years or more, or
 - Post 1975 for a period of, or periods which amount in aggregate to, 10 years or more.

Industrial Injuries Benefit Prescribed Asbestos Related Diseases

- PDD9 Diffuse Pleural Thickening
- PDD1 Asbestosis
- PDD8 Lung Cancer with PDD1 (asbestosis)
- PDD8a Lung Cancer in the absence of asbestosis
- PDD3 Mesothelioma



Asbestos Support West Midlands

138 Digbeth, Birmingham, B5 6DR

Telephone Helpline: 0121 678 8853

To email us click [HERE](#)

Part of the West Midlands Hazards Trust, Registered Charity Number 1125322

[Home](#)[About Us](#)[About Asbestos](#)[Advice](#)[Campaigns](#)[Contact us](#)

At Asbestos Support WM we offer [help and advice](#) to people, and their families, who are suffering from asbestos related diseases such as:

- [mesothelioma](#)
- [asbestos related lung cancer](#)
- [asbestosis](#)
- [diffuse pleural thickening](#)

We help with [welfare benefits](#) and [compensation schemes](#) and we can recommend expert legal help. We provide [information](#) about asbestos and



Marking Action Mesothelioma Day in the grounds of St Philip's Cathedral Birmingham